

Virginia Homes

Building Systems

Two-Story





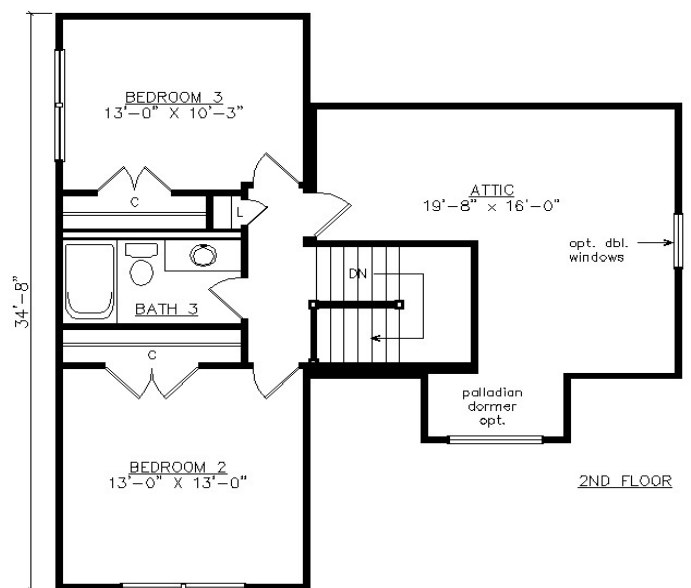
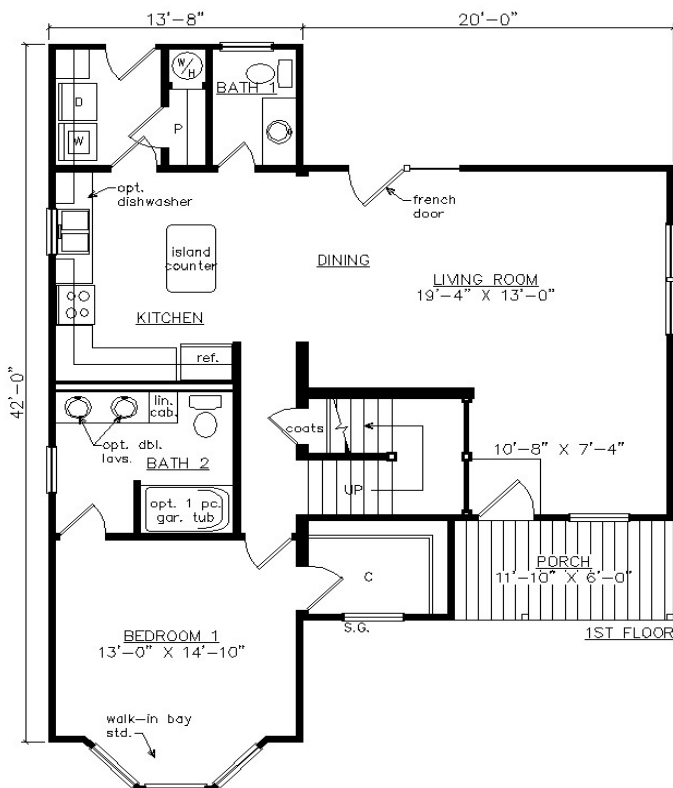
GEORGETOWN

42' x 33' 8"

1626 SQ. FT. (W/PORCH)

BEDROOMS: 3 BATHS: 2.5

SHOWN WITH 12/12 ROOF PITCH AND BAY WINDOW
OPTIONAL FANLITE DOOR AND DORMER



Virginia Homes
Building Systems

www.virginiahomesbuildingsystems.com

A Division of Modular Building Systems of PA



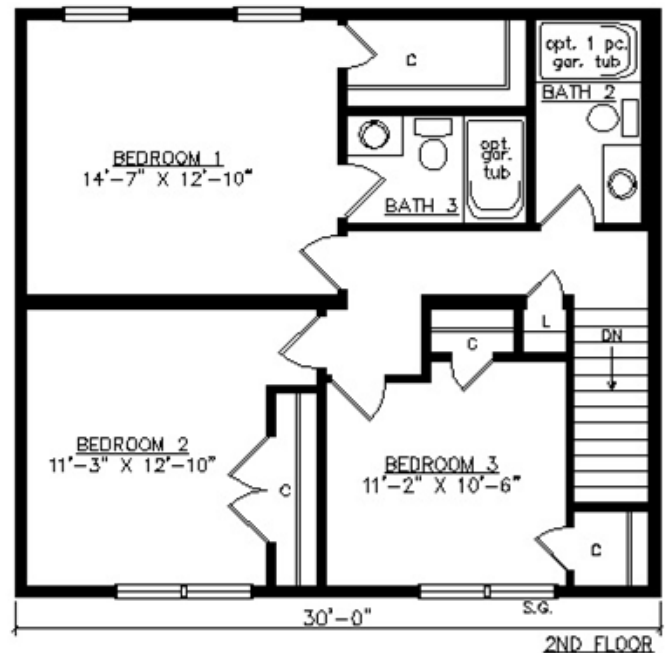
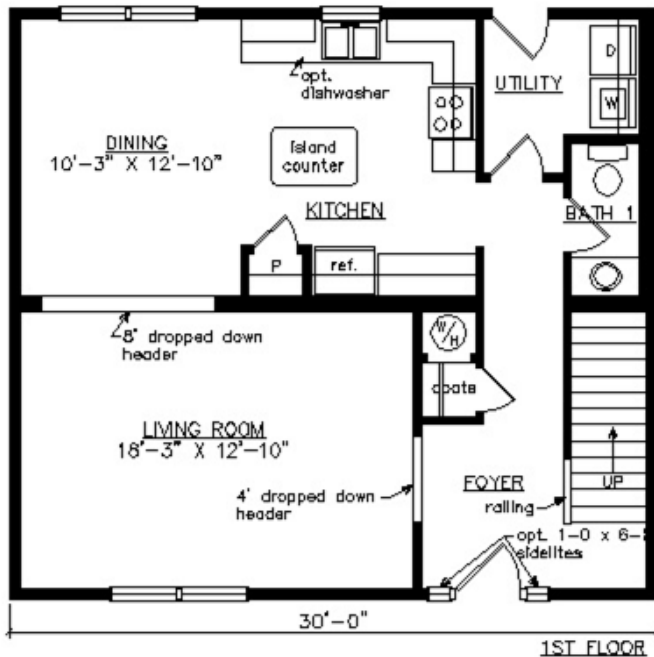
FAIRFAX

27'6" x 30'

1650 SQ. FT.

BEDROOMS: 3 BATHS: 2.5

SHOWN WITH OPTIONAL SITE BUILT PORCH,
DOOR SIDELITES AND FANLITE DOOR



Virginia Homes
Building Systems

www.virginiahomesbuildingsystems.com

A Division of Modular Building Systems of PA



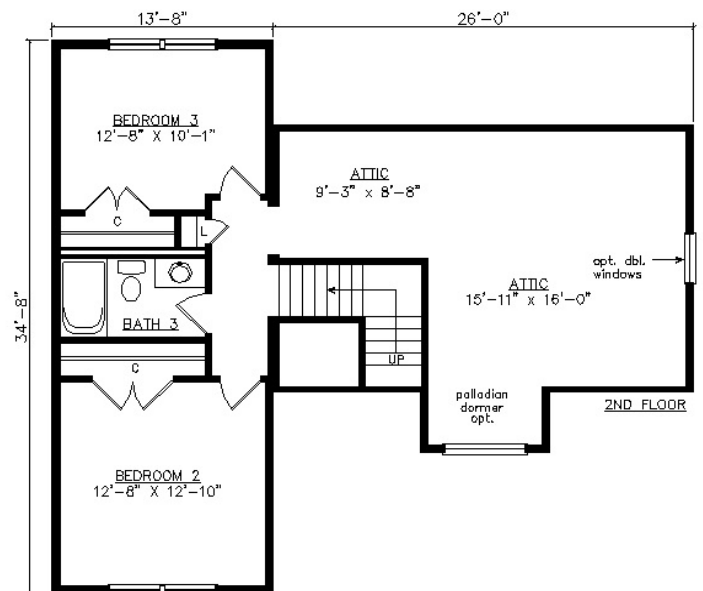
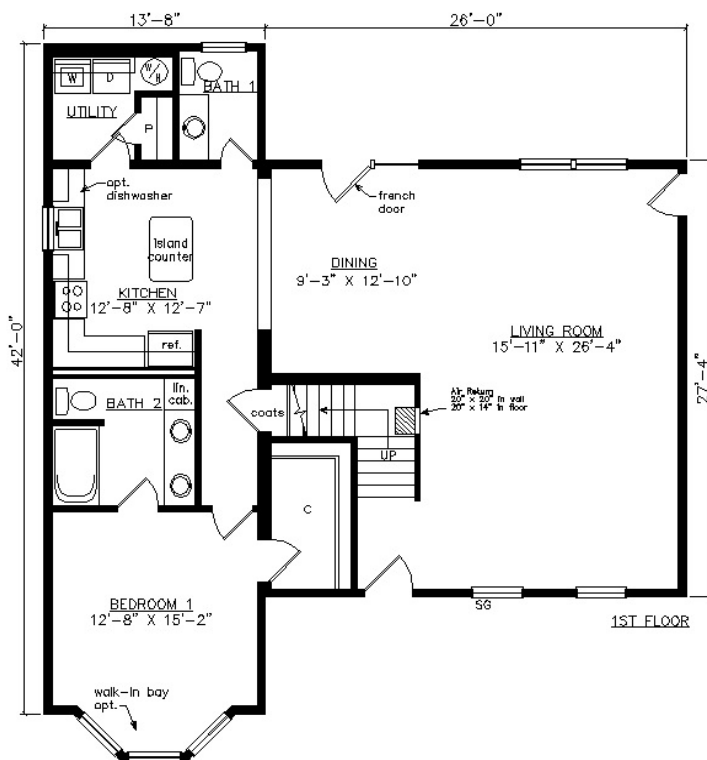
APPOMATTOX

42' x 39' 8"

1769 SQ. FT

BEDROOMS: 3 BATHS: 2.5

SHOWN WITH 12/12 ROOF PITCH. OPTIONAL WALK IN BAY, FANLITE DOOR, PORCH AND DORMER



Virginia Homes
Building Systems

www.virginiahomesbuildingsystems.com
A Division of Modular Building Systems of PA



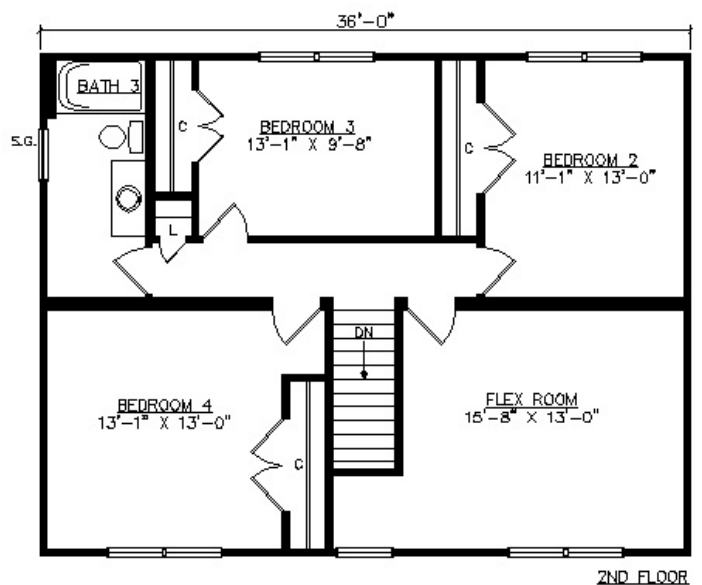
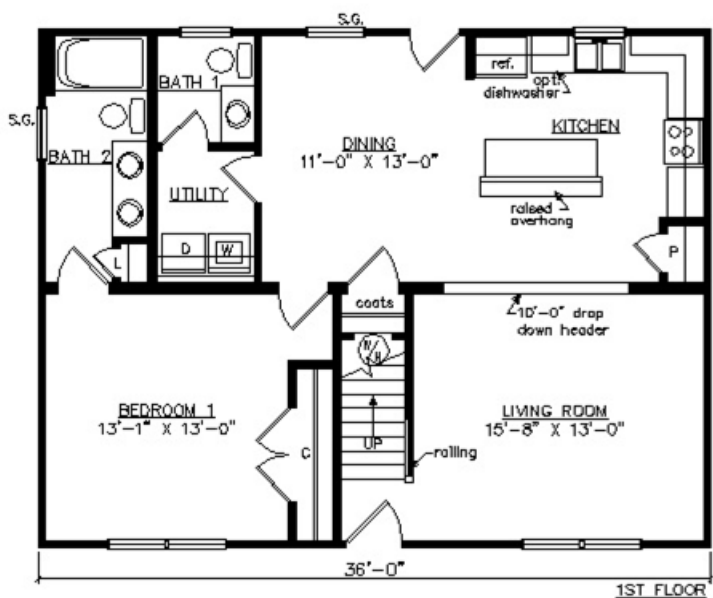
SUFFOLK

28'1" x 36'

2030 SQ. FT.

BEDROOMS: 4 BATHS: 2.5

SHOWN WITH OPTIONAL SITE BUILT STOOP AND FANLITE DOOR



Virginia Homes
Building Systems

www.virginiahomesbuildingsystems.com

A Division of Modular Building Systems of PA



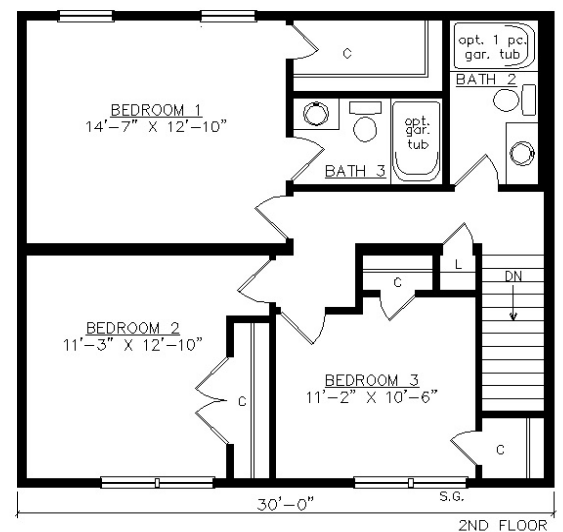
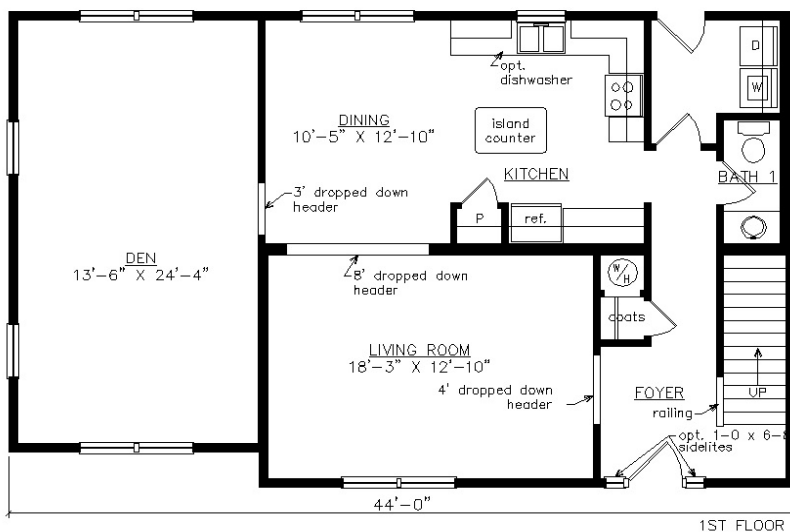
FAIRFAX I

27'6" x 44'

2007 SQ. FT.

BEDROOMS: 3 BATHS: 2.5

SHOWN WITH OPTIONAL SITE BUILT PORCH,
FANLITE DOOR AND DOOR SIDELITES



Virginia Homes
Building Systems

www.virginiahomesbuildingsystems.com
A Division of Modular Building Systems of PA



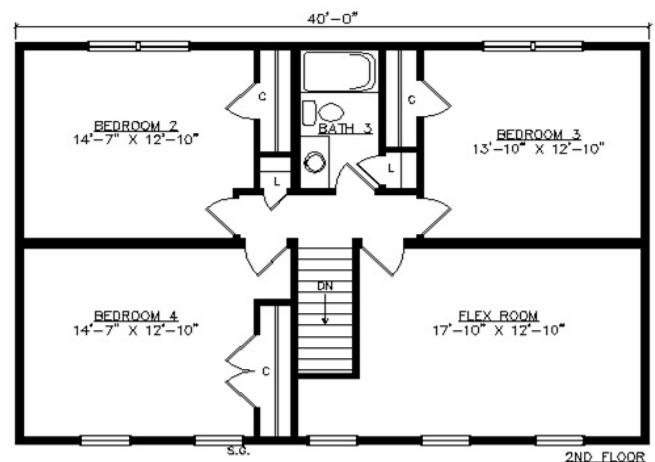
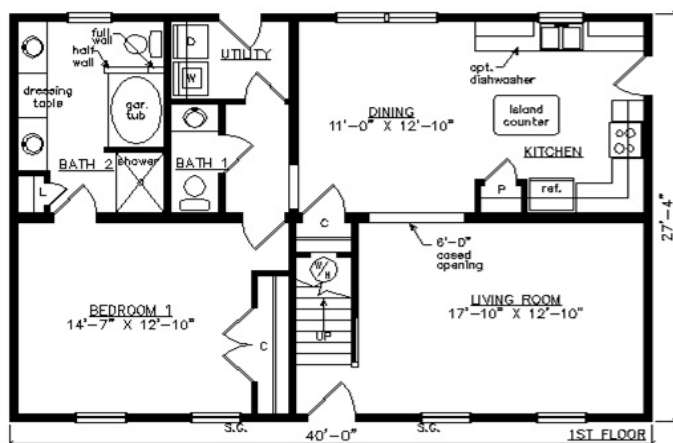
GLOUCESTER

28'1" x 40'

2256 SQ. FT.

BEDROOMS: 4 BATHS: 2.5

SHOWN WITH OPTIONAL PORCH, CRAFTSMAN WINDOWS,
CRAFTSMAN DOOR, 9/12 ROOF PITCH AND REVERSE GABLE



Virginia Homes
Building Systems

www.virginiahomesbuildingsystems.com
A Division of Modular Building Systems of PA



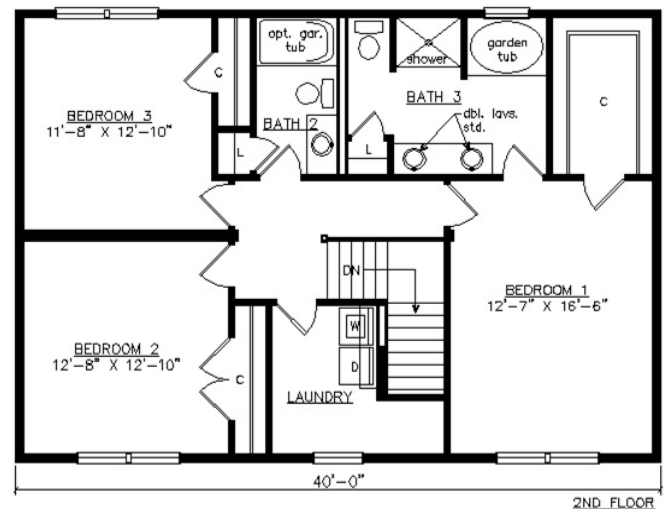
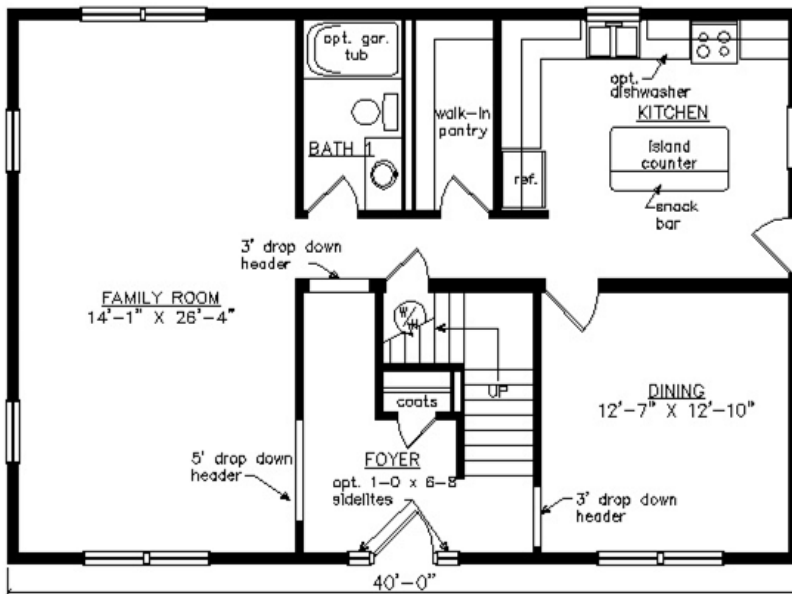
LANCASTER

27'6" x 40'

2200 SQ. FT.

BEDROOMS: 3 BATHS: 3

SHOWN WITH OPTIONAL SITE BUILT STOOP,
FRONT DOOR HEADER, FANLITE DOOR, BREEZEWAY AND GARAGE



Virginia Homes
Building Systems

www.virginiahomesbuildingsystems.com
A Division of Modular Building Systems of PA



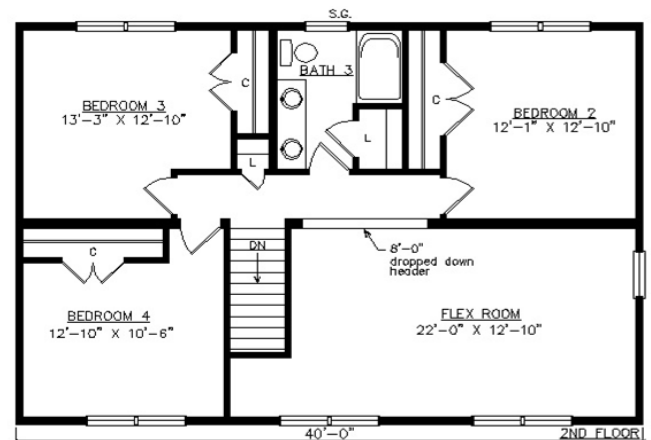
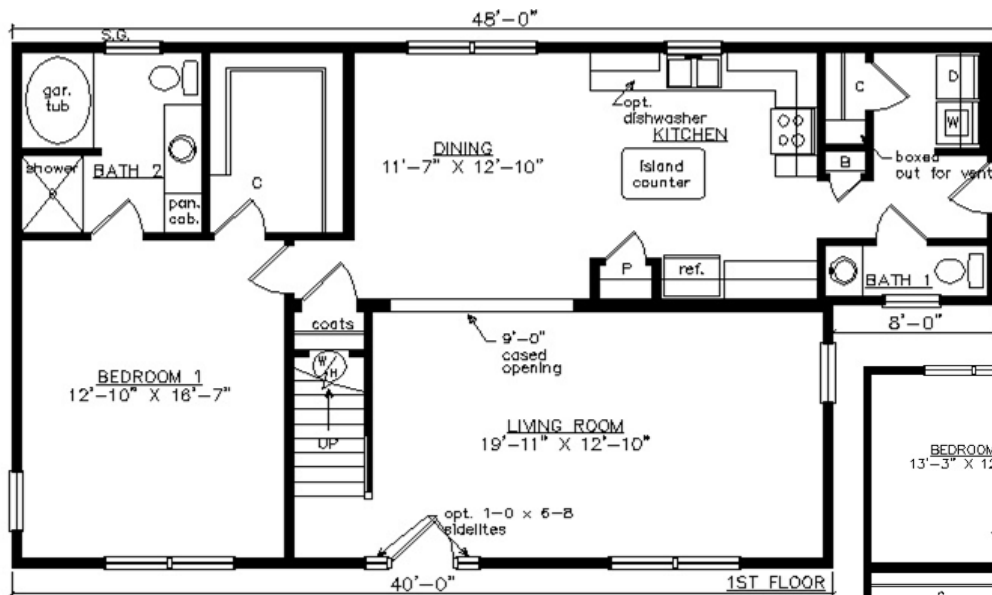
NORFOLK

28'1" x 48'

2365 SQ. FT.

BEDROOMS: 4 BATHS: 2.5

SHOWN WITH OPTIONAL PORCH,
CRAFTSMAN WINDOWS, CRAFTSMAN DOOR AND DOOR SIDELITES



Virginia Homes
Building Systems

www.virginiahomesbuildingsystems.com
A Division of Modular Building Systems of PA

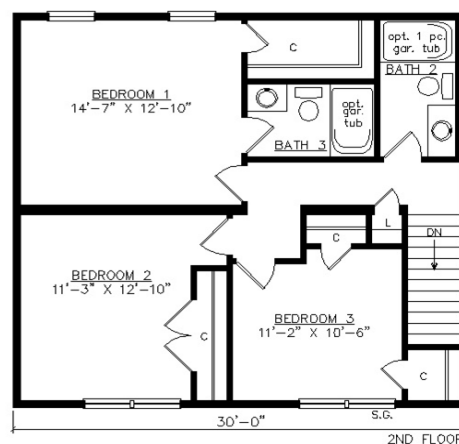
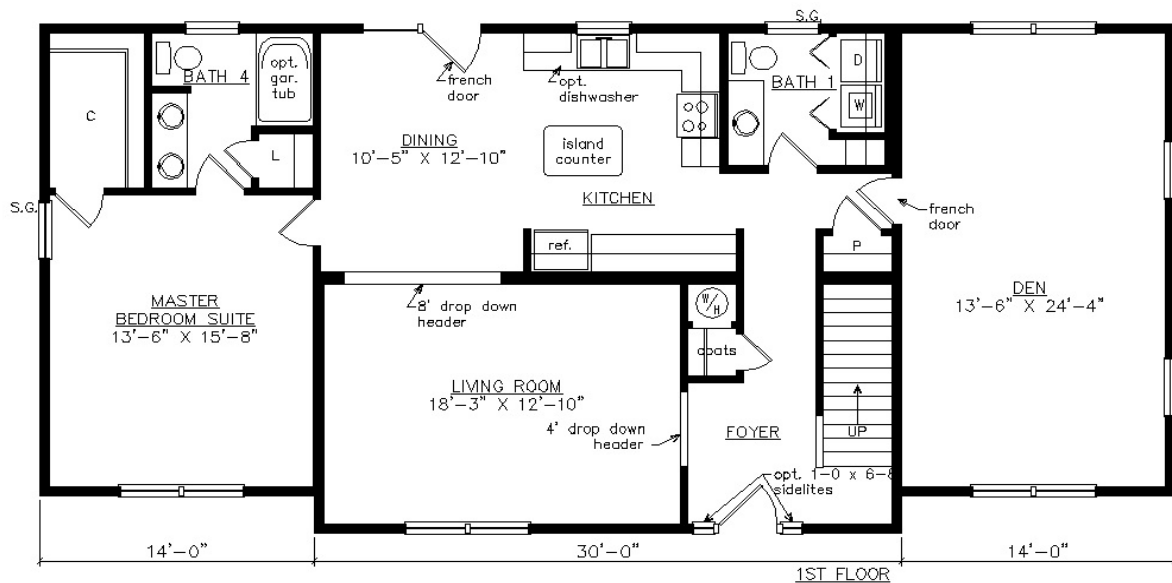


FAIRFAX II

27'6" x 58'
2364 SQ. FT.

BEDROOMS: 4 BATHS: 3.5

SHOWN WITH OPTIONAL SITE BUILT PORCH,
FANLITE DOOR, DOOR SIDELITES, 12/12 ROOF PITCH AND DORMERS



Virginia Homes
Building Systems

www.virginiahomesbuildingsystems.com
A Division of Modular Building Systems of PA



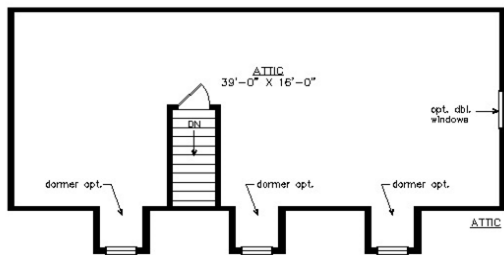
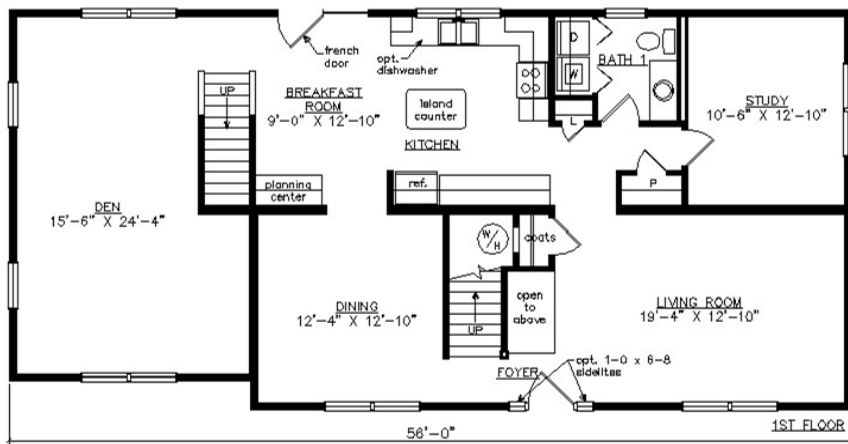
HANOVER

27'6" x 56'

2608 SQ. FT.

BEDROOMS: 3 BATHS: 2.5

SHOWN WITH OPTIONAL SITE BUILT STOOP, DOOR SIDELITES
AND FANLITE DOOR



Virginia Homes
Building Systems

www.virginiahomesbuildingsystems.com
A Division of Modular Building Systems of PA



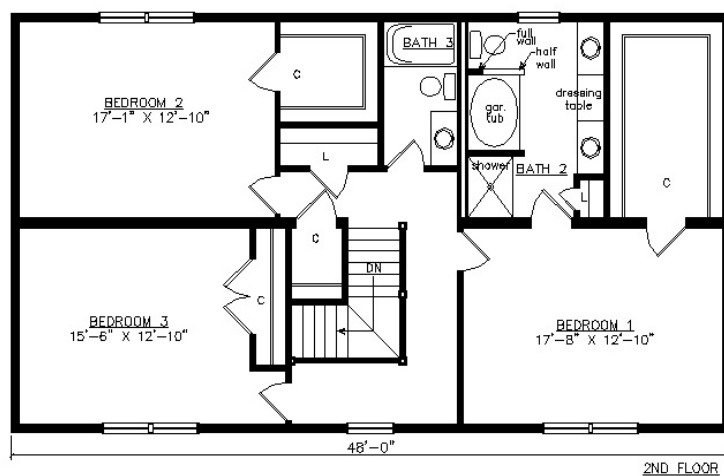
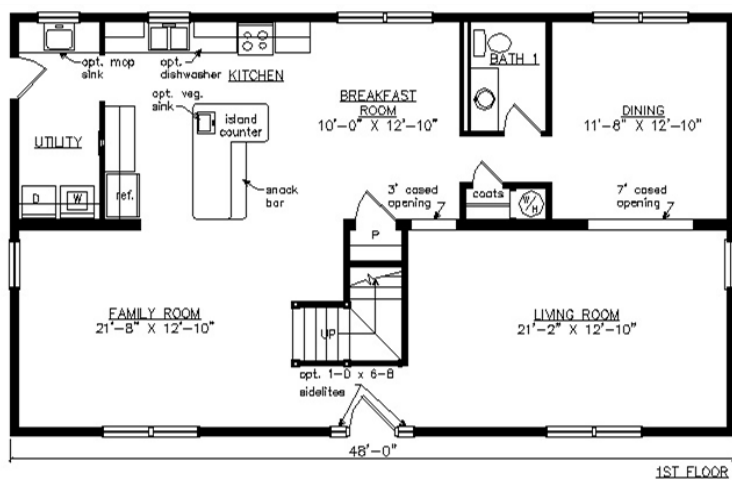
WESTHAVEN

27'6" x 48'

2640 SQ. FT.

BEDROOMS: 3 BATHS: 2.5

SHOWN WITH OPTIONAL PORCH, FANLITE DOOR AND DOOR SIDELITES



Virginia Homes
Building Systems

www.virginiahomesbuildingsystems.com
A Division of Modular Building Systems of PA



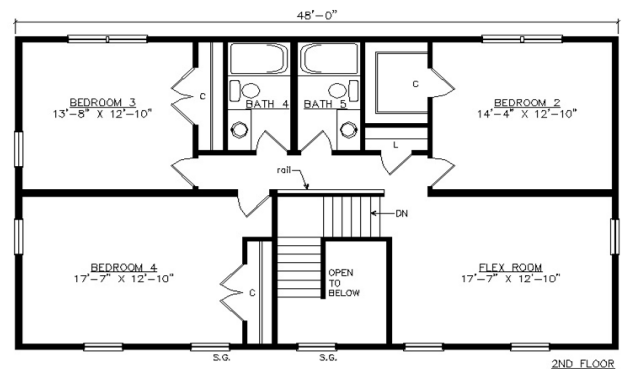
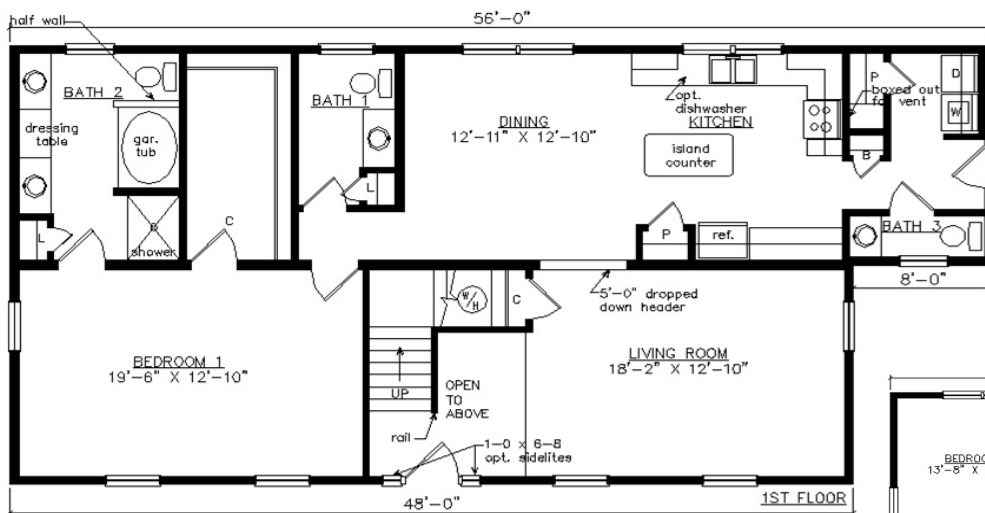
CHESAPEAKE

27'6" x 56'

2750 SQ. FT.

BEDROOMS: 4 BATHS: 3 (full) 2 (half)

SHOWN WITH OPTIONAL SITE BUILT PORCH,
CRAFTSMAN WINDOWS, CRAFTSMAN DOOR AND DOOR SIDELITES



Virginia Homes
Building Systems

www.virginiahomesbuildingsystems.com
A Division of Modular Building Systems of PA